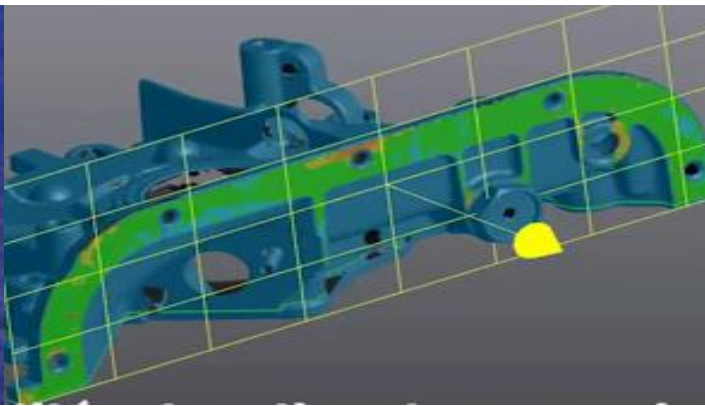
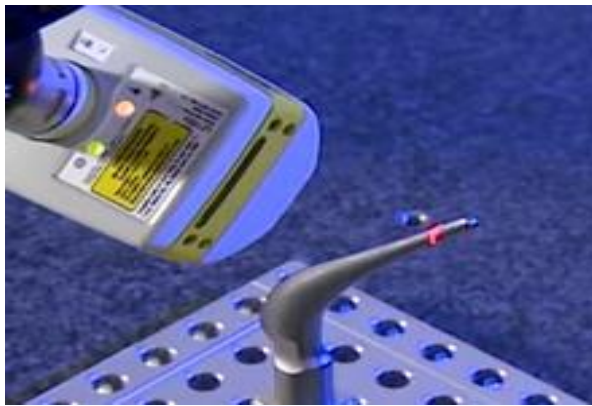


Numérisation 3D

Reverse engineering

Contrôle 3D par numérisation de surfaces



CPNV

ESSC

Cyril Guinchard,

Maître d'enseignement en
école supérieure au CPNV

40 parcours de
formation

8 bâtiments, 4
villes

320
collaborateurs

4200 apprentis

Informatique

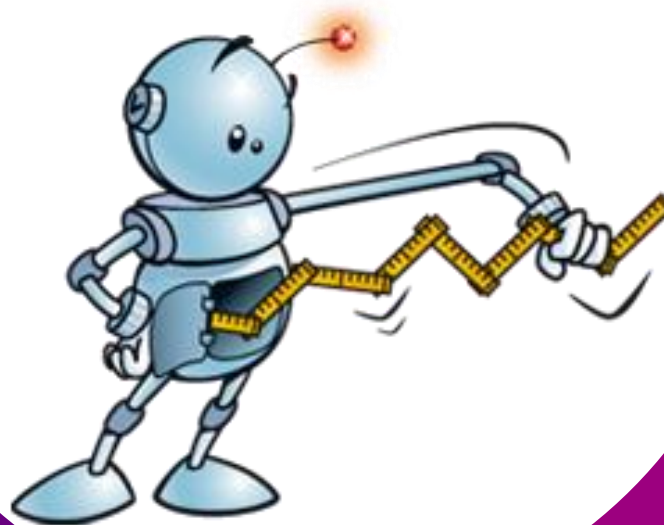
Génie
mécanique

Technicien ES



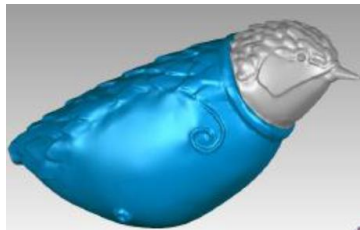
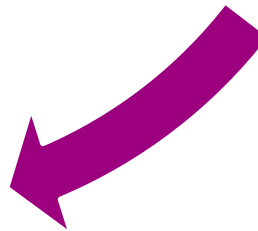
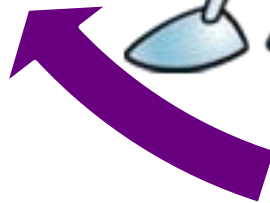
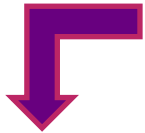
Fabrication traditionnelle

Objet

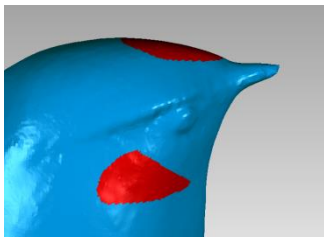


Traitement avancé

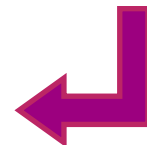
Scan



Fichier CAO

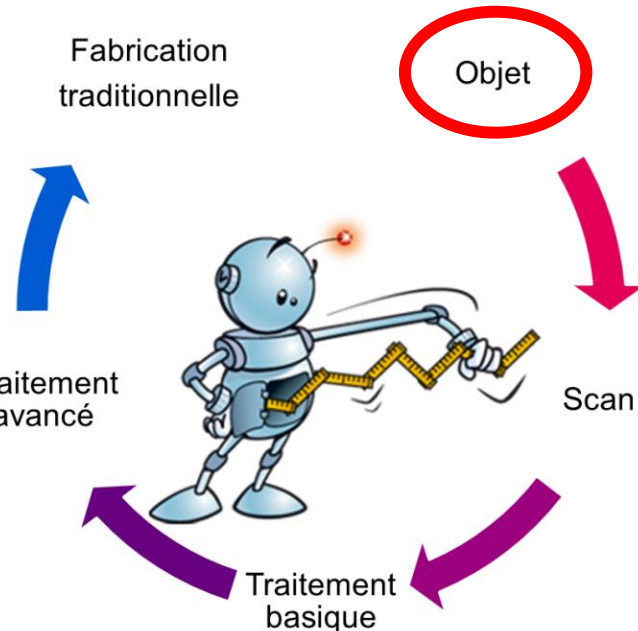


Fichier stl

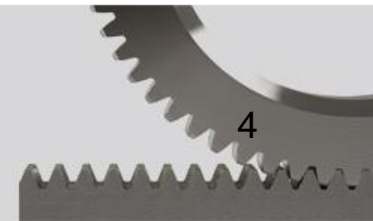


Objet réel à reproduire

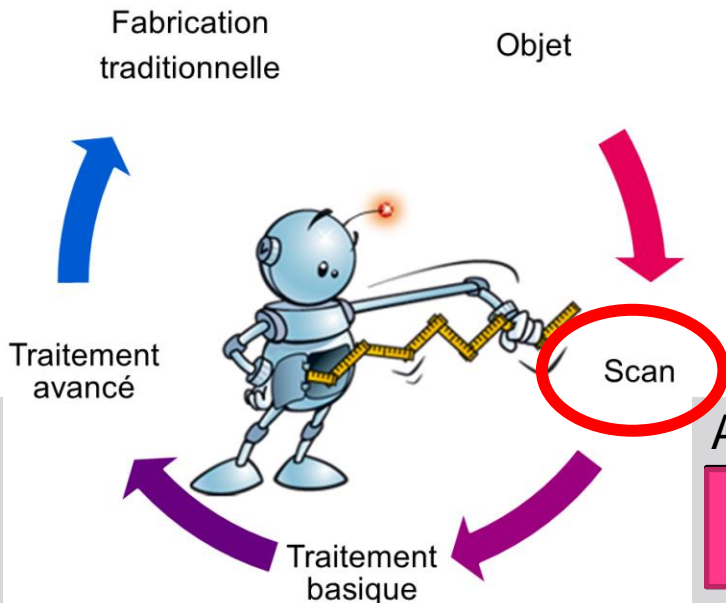
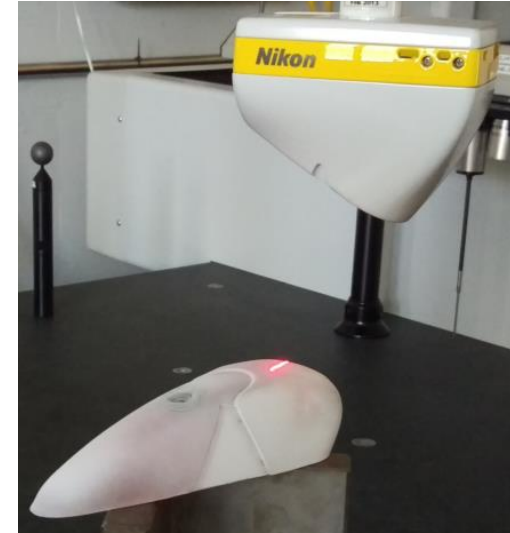
Modèle sculpté ou modelé



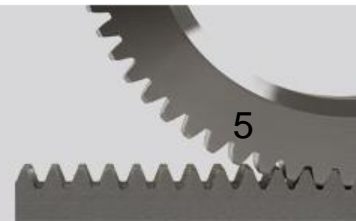
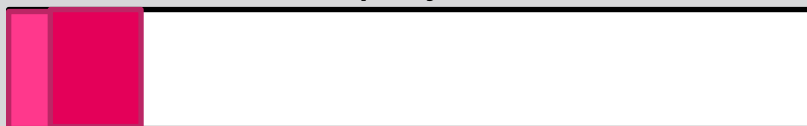
Avancement du projet



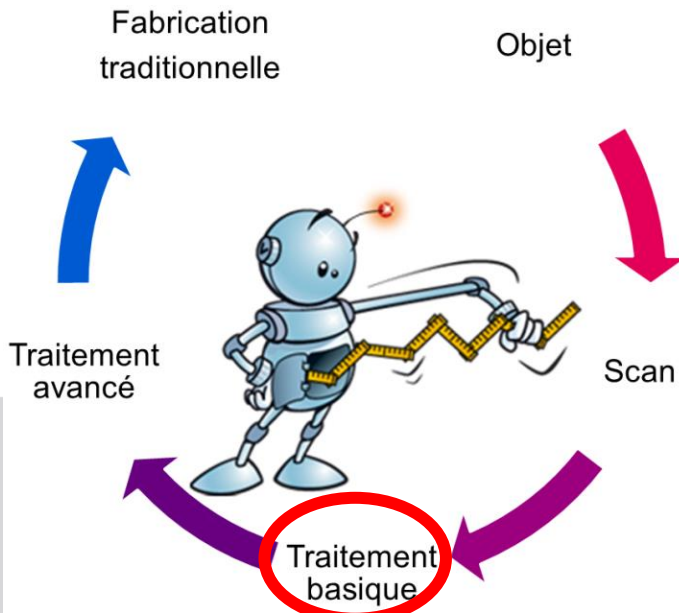
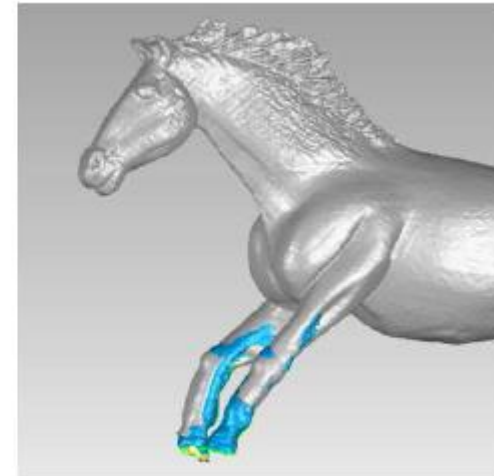
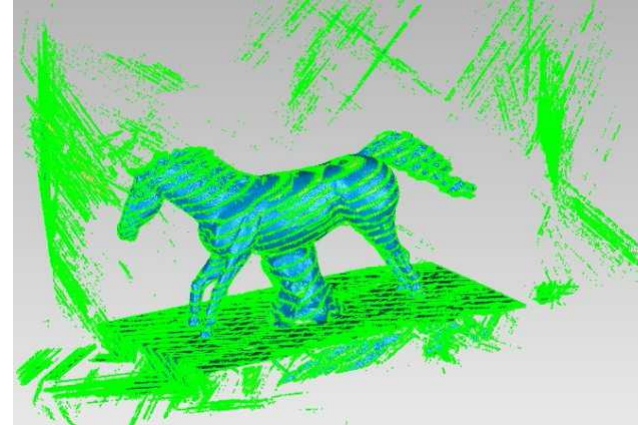
Smartphone
 Scanner 3D portable
 Scanner 3D sur bras
 Scanner 3D de haute
 précision sur machine 3D



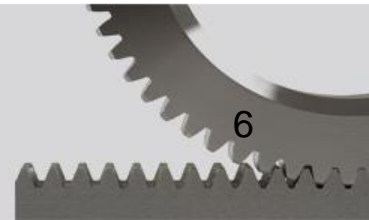
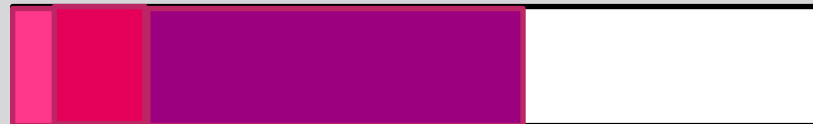
Avancement du projet



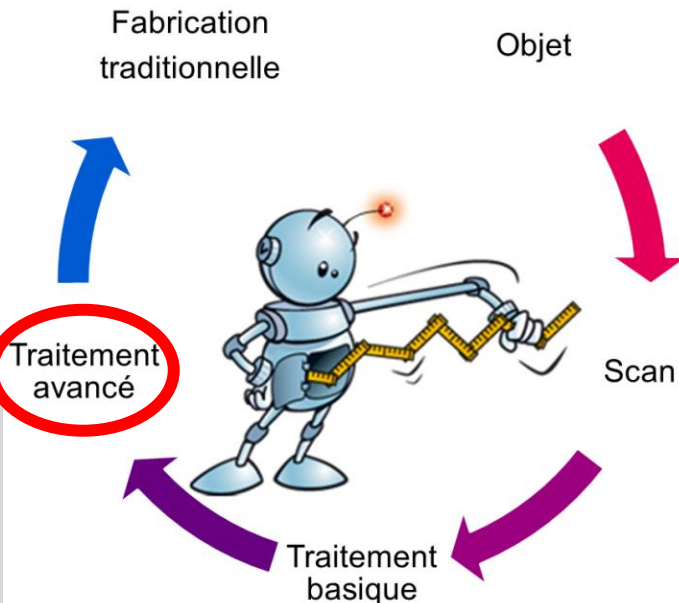
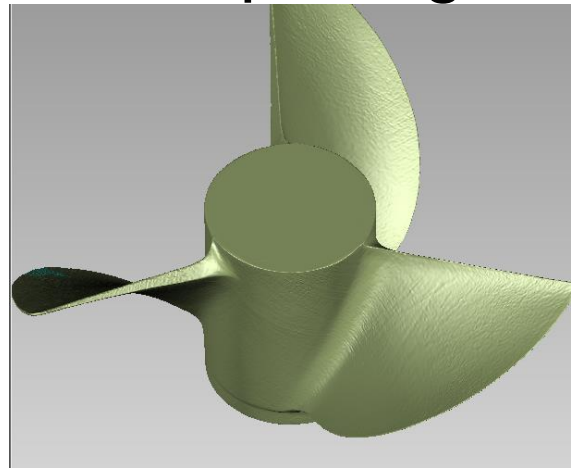
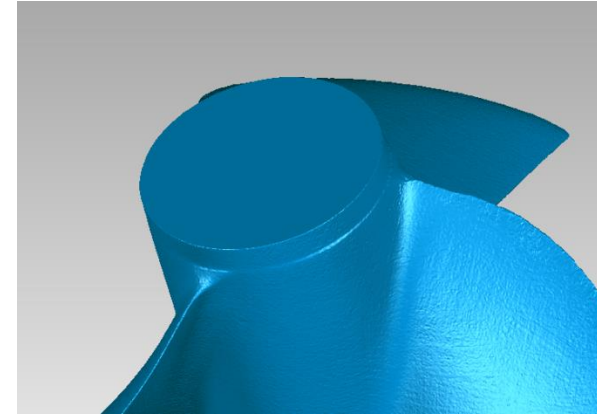
- Nettoyage des fichiers
- Assemblage des fichiers
- Réparation et remplissage des surfaces
- Validation et export en stl



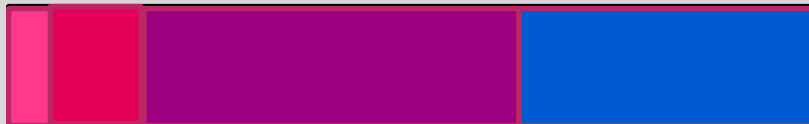
Avancement du projet



- Nettoyage fin de fichiers
- Reconnaissance de formes
- Construction du maillage
- Génération d'un fichier paramétrique
- Export en format CAO, sat, step ou iges



Avancement du projet

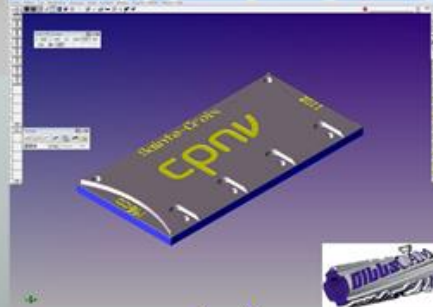


CONCEPTION ASSISTEE
 PAR ORDINATEUR

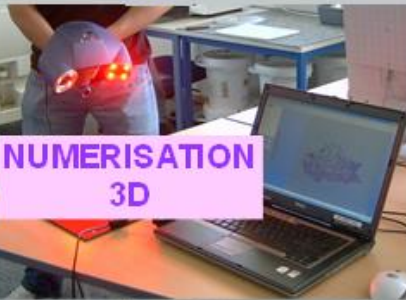
PROTOTYPAGE
 RAPIDE

FABRICATION
 ASSISTEE PAR
 ORDINATEUR

Chaîne de compétences



OU

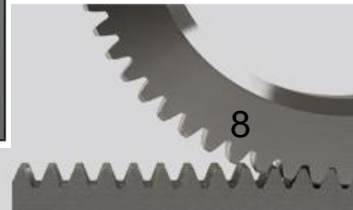
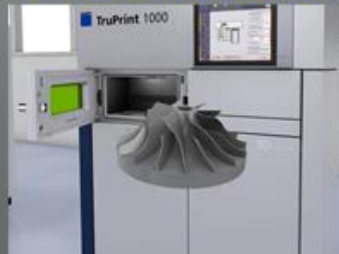


NUMERISATION
 3D

CONTROLE

Fabrication additive

USINAGE



A votre service

NOHAM DJATOUT

Chargé de comptes | Account Manager

AMETEK SAS DIVISION CREAFORM | 24, rue Jean-Pierre Timbaud | 38600 FONTAINE | France

T : +33(0) 457 383 150 x646 | C : +33(0) 675 021 094 | F : +33(0) 476 190 433

NEW Direct Hotline : +33 (0) 4 57 38 31 55

noham.djatout@ametek.com | www.creaform3d.com

Nick Roosen

Sales Account Manager

CH/HU/HR/SLO/SRB/BIH/Baltics

nick.roosen@nikon.com

Mobile: +32 499 203814

Tel: +32 16 74 01 00

Fax: +32 16 74 01 02

Nikon Metrology Europe NV

Geldenaaksebaan 329

3001 Leuven

Belgium

BE 0437.416.946

www.nikonmetrology.com

Cyril Guinchard

Maître d'enseignement professionnel

CPNV (Centre professionnel du Nord vaudois)

École des Métiers et École Supérieure à Ste-Croix (EMSC/ESSC)

AMTC, Advanced Manufacturing Technology Center

Filière mécanique, Technopôle, Chemin du Progrès 31, 1450 Ste-Croix

Direct +4124 557 61 20, fax +4124 557 61 26